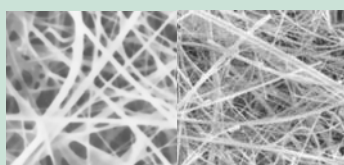


# EPV.SC (KFM.SC)

## Fiberglass, cellulose and polypropylene pleated Filter Cartridges and Capsules

For efficient protection of membrane filters and clarifying filtration of liquids



### Description

The EPV.SC cartridge is produced on the basis of the pleated filter material made of microfine glass, cellulose and polypropylene fibers. Efficient filtration is achieved by means of high adsorption of fiberglass and cellulose and diversity of chemical nature of microfibers in combination with mechanical retention.

### Features and advantages

#### Features

Glass, cellulose and polypropylene microfibers based pleated cartridge

High strength, the stable matrix of the cartridge

#### Advantages

- High filtration efficiency (> 98-99.5 %);
- Increased contamination capability and lifetime provide long-term operation without regenerations;
- Excellent hydrophilicity of fibers ensures filtration under minimal differential pressure (even by gravity flow);
- Designed for highly efficient clarifying filtration and protection of membrane filters.

- Filter material structure precludes the possibility of 'dusting' and medium migration;
- Withstands multiple wash outs and sterilizations;
- Reliable filtration under heavy duty operational conditions.

### Materials

<b>Membrane</b>	Microfibers of glass, cellulose and polypropylene
<b>Draining layer</b>	Polypropylene
<b>Body, end parts, adapter</b>	Polypropylene
<b>O-rings</b>	Silicone (viton, EPDM available)

### Operational parameters

<b>Maximal differential pressure</b>	0.5 MPa at 20 °C, 0.2 MPa at 80 °C (Filter Cartridges) 0.4 MPa at 20 °C, 0.2 MPa at 60 °C (Capsules)
<b>Maximal reverse differential pressure</b>	0.2 MPa at 20 °C, 0.05 MPa at 80 °C (Filter Cartridges)
<b>Maximal operational temperature</b>	80 °C (Filter Cartridges)

## Specifications

### Micron rating

0.5 µm  
0.8 µm  
1 µm  
3 µm

### Nominal Dimensions and Filter Areas

#### Filter Cartridges

H, mm	D, mm	S, m <sup>2</sup>
125 (5")	70	0.25
250 (10")	70	0.5
500 (20")	70	1.0
750 (30")	70	1.5
1000 (40")	70	2.0

#### Capsule filters

H, mm	D, mm	S, m <sup>2</sup>
250 (10")	94	0.5
125 (5")	92	0.25
60 (2,5")	92	0.12

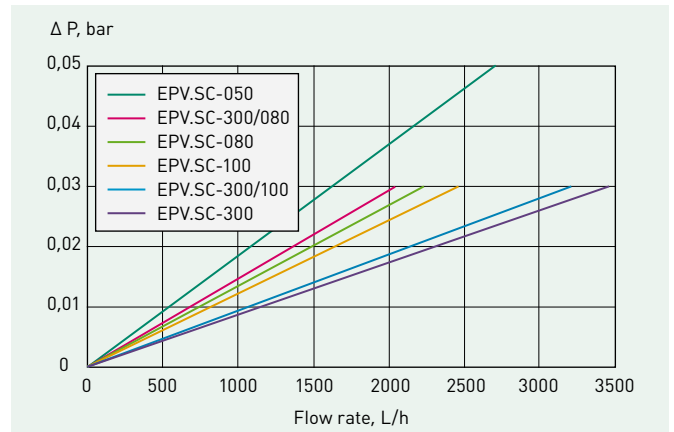
**H** - height  
**D** - diameter  
**S** - filtration surface area

## Sterilization and wash

Direct and back wash	Hot water (up to 80 °C), chemical reagents
Autoclaving	121 °C, 0.12 MPa, 30 min, 50 cycles
Steam sterilization*	132 °C, 0.2 Mpa, 30 min, 20 cycles

\* Only for filter cartridges

## Flow Rates of EPV.S H = 250 mm



## Filter Cartridges ordering information

EPV.SC	300/100	D1	250
Brand	Micron rating	Adapter code	Cartridge height
	<b>Code</b>	A	125 mm (5")
	050 0.5 µm	D	250 mm (10")
	080 0.8 µm	D1	500 mm (20")
	100 1.0 µm	A1	750 mm (30")
	300/100 3/1 µm	A4	1000 mm (40")
	300/080 3/0.8 µm	B	
	300 3 µm	B(SI)	

## Capsules ordering information

KFM.SC	300/080	K	60
Brand	Micron rating	Connection type	Cartridge height
	<b>Code</b>	K – sanitary flange connection	60 mm
	050 0.5 µm		125 mm
	080 0.8 µm	P – thread tapered connection	250 mm
	100 1.0 µm		
	300/100 3/1 µm		
	300/080 3/0.8 µm		
	300 3 µm		